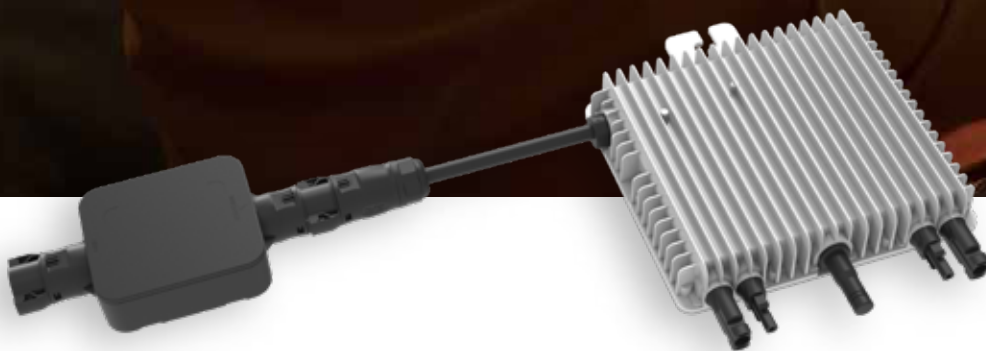


# Micro Inverter (Integrated NS Protection Device)

SUN-M60/80/100G3-EU-Q0



IP67 protection degree, 15 years warranty



2 MPP trackers, module level monitoring



WIFI communication



Rapid shutdown function

**Deye**

Stock Code: 605117.SH

Micro Inverter (Integrated NS Protection Device)	SUN-M60G3-EU-Q0	SUN-M80G3-EU-Q0	SUN-M100G3-EU-Q0
<b>Input Data (DC)</b>			
Recommended Input Power (STC)	210-420W (2 Piece)	210-600W (2 Piece)	210-700W (2 Piece)
Maximum Input DC Voltage (V)	60		
MPPT Voltage Range (V)	25-55		
Full Load DC Voltage Range (V)	30-55	33-55	40-55
Max. DC Short Circuit Current (A)	2x19.5		
Max. Input Current (A)	2x13		
No.of MPP Trackers	2		
No.of Strings per MPP Tracker	1		
<b>Output Data (AC)</b>			
Max. Output Apparent Power (VA)	600	800	1000
Rated Output Power (W)	600	800	1000
Rated Output Current (A)	2.8/2.7	3.7/3.5	4.6/4.4
Max.AC Output Current (A)	2.8/2.7	3.7/3.5	4.6/4.4
Grid Connection Form	L+N+PE 220V/184V-242V 230V/ 195.5V-253V		
Rated output voltage/range (V)			
Rated Grid Frequency/range (Hz)	50Hz/45Hz-55Hz 60Hz/55Hz-65Hz		
Power Factor Adjustment Range	>0.99		
Total Harmonics Current Distortion (THDi)	<3%		
DC Component Of Grid	<0.5%In		
Maximum Units per Branch	8	6	5
<b>Efficiency</b>			
Max Efficiency	96.5%		
MPPT Efficiency	>99%		
<b>Mechanical Data</b>			
Night Time Power Consumption	50mW		
Ambient Temperature Range	-40-65°C, >45°C Derating		
Cabinet Size (WxHxD mm)	190×212×40 (Excluding Connectors and Brackets)		
Weight (kg)	2.8		
Cooling	Free Cooling		
Enclosure Environmental Rating	IP67		
<b>Features</b>			
Communication	WIFI		
Grid Connection Standard	IEC 61727, IEC 62116, CEI 0-21, EN 50549, NRS 097, RD 140, UNE 217002, OVE-Richtlinie R25, G98, VDE-AR-N 4105		
Safety EMC / Standard	IEC/EN 61000-6-1/2/3/4, IEC/EN 62109-1, IEC/EN 62109-2		
Warranty	15 Years		
<b>Network and System Protection Device</b>	<b>SUN-MI-RELAY-01</b>		
<b>AC Input Data (Inverter)</b>			
Nominal Voltage	220V/230V		
Nominal Frequency	50Hz		
Max AC Current	12A		
Nominal AC Current	12A		
Matching Inverter	MicroInverter		
<b>AC Output Data(Grid)</b>			
Nominal Voltage	220V/230V		
Nominal Frequency	50Hz		
Max AC Current	12A		
Nominal AC Current	12A		
<b>General Data</b>			
Ambient Temperature Range	-40-65°C		
Humidity	0%-100% RH		
Cabinet Size (WxHxD mm)	111×95×37.7 (Excluding Connectors and Brackets)		
Weight (kg)	0.34		
Enclosure Environmental Rating	IP67		
Communication	Wireless/WIFI		
Safety EMC / Standard	IEC/EN 61000-6-1/2/3/4, IEC/EN 62109-1, IEC/EN 62109-2, VDE-AR-N 4105		
Warranty	15 Years		

# Microinverter

SUN-M130/160/180/200/220G4-EU-Q0

SUN-M180/200G4-EU-Q0-P



IP67 protection degree, \*10 years warranty



WIFI communication

18

Max. DC input current of 18A, adapt to 700W PV module



4 MPP trackers, module level monitoring



Rapid shutdown function

**Deye**

Stock Code: 605117.SH

Model	SUN-M130G4 -EU-Q0	SUN-M160G4 -EU-Q0	SUN-M180G4 -EU-Q0	SUN-M200G4 -EU-Q0	SUN-M180G4 -EU-Q0-P	SUN-M200G4 -EU-Q0-P	SUN-M220G4 -EU-Q0
<b>PV String Input Data</b>							
Max. PV Input Power (W)	210-460 (4 Pieces)	210-560 (4 Pieces)	210-630 (4 Pieces)	210-700 (4 Pieces)	210-630 (4 Pieces)	210-700 (4 Pieces)	210-770 (4 Pieces)
Max. PV Input Voltage (V)	60						
Start-up Voltage (V)	20						
MPPT Voltage Range (V)	25-55						
Rated PV Input Voltage (V)	42.5						
Max. Operating PV Input Current (A)	15+15+15+15				18+18+18+18		
Max. Input Short Circuit Current (A)	22.5+22.5+22.5+22.5				27+27+27+27		
No. of MPP Trackers/ No. of Strings per MPP Tracker	4/1						
<b>AC Output Side</b>							
Rated AC Output Active Power (W)	1300	1600	1800	2000	1800	2000	2200
Max. AC Output Apparent Power (VA)	1300	1600	1800	2000	1800	2000	2200
Rated AC Output Current (A)	6/5.7	7.3/7	8.2/7.9	9.1/8.7	8.2/7.9	9.1/8.7	10/9.6
Max. AC Output Current (A)	6/5.7	7.3/7	8.2/7.9	9.1/8.7	8.2/7.9	9.1/8.7	10/9.6
Rated Output Voltage/Range (V)	220/230 0.85Un-1.1Un						
Grid Connection Form	L/N/PE						
Rated Output Grid Frequency/Range(Hz)	50/45-55, 60/55-65						
Max. Unit per Branch	5	4	3	3	3	3	3
Power Factor Adjustment Range	0.9 leading-0.9 lagging						
Total Current Harmonic Distortion THDi	<3%						
DC Injection Current	<0.5%In						
<b>Efficiency</b>							
Max. Efficiency	96.5%						
Euro Efficiency	96.0%						
MPPT Efficiency	>99%						
<b>Equipment Protection</b>							
DC Polarity Reverse Connection Protection	Yes						
AC Output Overcurrent Protection	Yes						
AC Output Overvoltage Protection	Yes						
AC Output Short Circuit Protection	Yes						
Thermal Protection	Yes						
DC Terminal Insulation Impedance Monitoring	Yes						
Power Network Monitoring	Yes						
Island Protection Monitoring	Yes						
Earth Fault Detection	Yes						
Overvoltage Load Drop Protection	Yes						
<b>Interface</b>							
Communication Interface	WiFi						
<b>General Data</b>							
Operating Temperature Range (°C)	-40 to +65°C, >45°C Derating						
Permissible Ambient Humidity	0-100%						
Permissible Altitude (m)	2000m						
Noise (dB)	≤25						
Ingress Protection(IP) Rating	IP 67						
Inverter Topology	Isolated						
Over Voltage Category	OVC II(DC), OVC III(AC)						
Cabinet Size (WxHxD mm) (Excluding Connectors and Brackets)	311×250.5×36.5						358×255.5×36.5
Weight (kg)	5.1						5.2
Warranty	10 Years						
Type of Cooling	Natural Cooling						
Grid Regulation	IEC 61727, IEC 62116, CEI 0-21, EN 50549, NRS 097, RD 140, UNE 217002, OVE-Richtlinie R25, G99, VDE-AR-N 4105						
Safety EMC/Standard	IEC/EN 61000-6-1/2/3/4, IEC/EN 62109-1, IEC/EN 62109-2						

\*Note: 15 Years Warranty (Only Installed in Germany and Austria)